

## Product Guide

### SPECIFICATION AND INSTALLATION

- Product Warnings
- Safety Guidelines
- Kit Contents
- Required Tools
- Preparation Tips
- Installation Procedure
- Cleaning & Maintenance
- Warranty Information

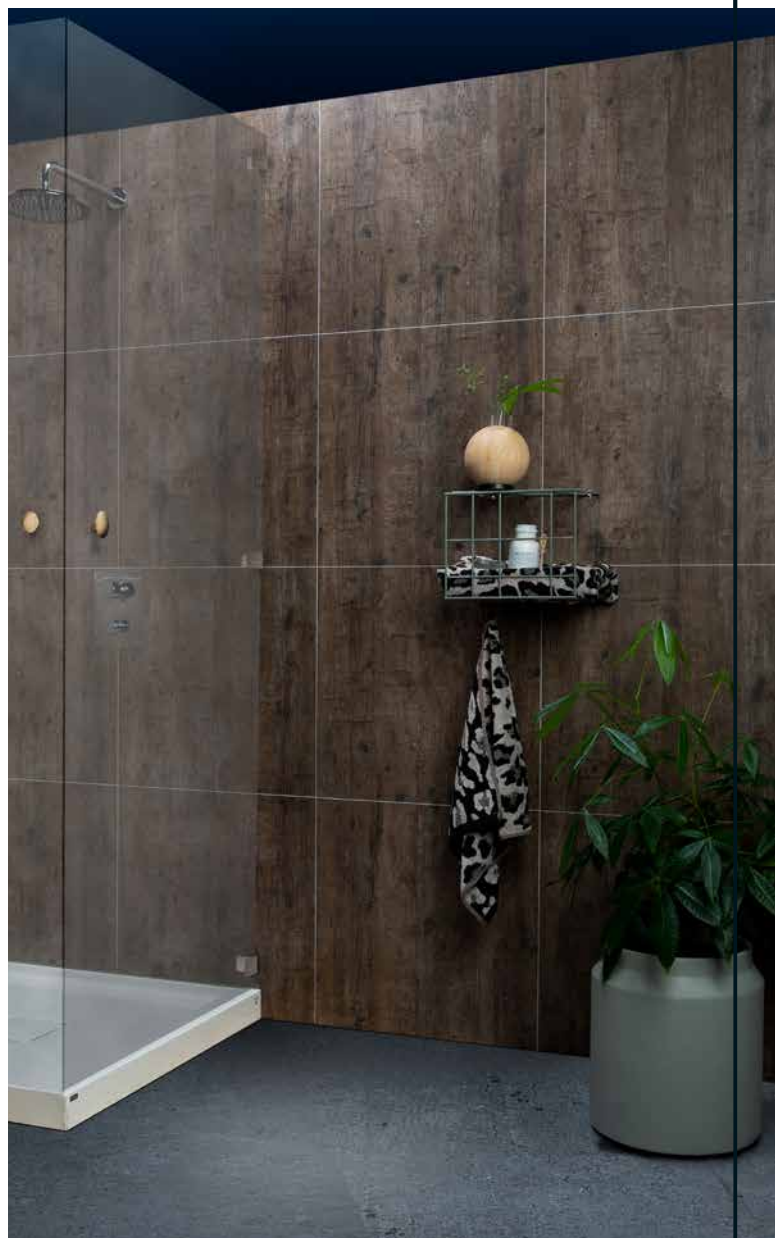
Read and understand before installing Fibo Wall panels.

Jan. 2020



# Table of content

<b><u>Safety Guidelines</u></b>	<b>3</b>
<b><u>General information</u></b>	<b>4</b>
Required tools	4
Storage area	5
<b><u>The Fibo System</u></b>	<b>5</b>
Necessary materials	6
Profiles	6
Accessories	8
<b><u>Installation</u></b>	<b>9</b>
Helpful Hints	9
Caulking Tips	9
Backwall	9
Installing Access Panels	10
Installing niches/shelves	10
Dog-leg	10
Sealing Faucet	10
Sealing and finishing with L profile	10
Installing accessories	10
<b><u>Base Profile Detail</u></b>	<b>11</b>
Shower tray and bathtub	11
Whole room installation	11
<b><u>Disclaimer</u></b>	<b>12</b>
Disclaimer	12
<b><u>Installation Procedures</u></b>	<b>13</b>
Overview installation methods	13
Alcove – Standard Wall Panels	14
Shower Corner – Standard Wall Panels	17
<b><u>Cleaning</u></b>	<b>20</b>
General information about detergents	20
Good advice	20
Daily/weekly cleaning	20
Less frequent cleaning	20
Residues of soap and skin fat	20
Stain/Problem Spots	20
Aluminium Profiles	20
Sealant	20
<b><u>Maintenance</u></b>	<b>21</b>
Replacing Sealant	21
Chips and Scratches	21
Aluminum Profiles	21
<b><u>Warranty</u></b>	<b>22</b>
Conditions, Exclusions and Limitations	22



# Safety Guidelines

If our product is properly installed and maintained, as stated in these instructions, it will not leak.

## **WARNING:**

To avoid product damage, personal injury, or even possible death, carefully read, understand and follow all the instructions in this guide before installing the product(s). Read and understand the instructions and warning on cleaning fluids and operating tools used in this installation process. Proper use of tools and the products described in this guide is your responsibility.

## **WARRANTY:**

This product is covered by a 15 years warranty. Refer to the Warranty section in this manual for complete details.

## **IMPORTANT NOTICE:**

Indicates that equipment or property damage can result if instructions are not followed.

## **CAUTION:**

Indicates a potentially hazardous situation which, if not avoided, may result in injury. It may also be used to alert against unsafe practices.

## **WARNING:**

Indicates a potentially hazardous situation which, if not avoided could result in serious injury or death.

**Use proper installation Methods:** Follow all instructions related to wall surface preparation. Failure to follow such instructions could cause the panels to detach from the wall surface after installation, resulting in personal injury. Failure to follow these instructions could result in water damage.

**Lifting Hazard:** According to the national institute for occupational safety and health, the recommended maximum safe lifting weight is 51 pounds, with all lifting conditions perfect – minimal forward reach, steady load close to the body, straight back, load between knees and shoulders, and good grips. When carrying a heavy, load get help.

Personal Protection: Be sure to use all personal protective equipment, such as sturdy work boots, preferably with steel toes, gloves, and hard hat if necessary, to ensure your own safety. To prevent possible damage to your hearing, always wear ear protection, such as earmuffs or earplugs, when working around power tools.

**Sharp Edge Hazard:** After cutting the edge of a Fibo panel, it can be sharp. When clicking the panels together do not place hand or finger in between as this can cause cut injury. Wear protective gloves to prevent personal injury.

**Room Temperature & Air Humidity:** Allow the Fibo Wall panels to adjust to room temperature and air humidity for at least 72 hours before installation, and read the Fibo Seal Technical Datasheet for proper handling and storage for the sealant. The panels should be installed at temperatures not less than 65°F and 45%RH. Panels should not be installed in areas where the temperature may drop below freezing (32°F). Failure to follow this recommendation could adversely affect the sealant function and change the dimension of the panel, causing it to warp.

**Eye Protection:** Be sure to use all personal protective equipment to ensure your own safety. To avoid eye injury, always wear protective glasses with side shield when using power tools. Also, make sure no one else can be injured by flying particles when using power tools.

**Fire Hazard:** Personal injury or death can result from a fire caused by flammable liquids. Cleaners or solvents can be highly explosive, resulting in personal injury or even death, when not used properly. Clean up any flammable substances immediately. Sparks or open flames can cause flammable substances to ignite. DO NOT smoke while working on or near any flammable substances.

**Solvent Hazard:** Follow all the manufacturer's safety instructions for Fibo Seal, Fibo Adhesive, Fibo Clean and Fibo Wipes. Fibo Clean is both flammable and hazardous to breathe, it may cause dizziness so make sure to have proper ventilated room when in use. Fibo Wipes may cause dry skin with skin contact. Personal injury can result from improperly handling or use of products. Always follow the manufacturer's recommendations for the safe use of these products. Ventilate any work area before beginning to apply sealant, cleaning agents or solvents.

**Dust Hazard:** When cutting or drilling the Fibo product, use a dust collection method which prevents dust particles from going into the air. Always use OSHA approved dust mask when cutting, drilling, or sanding Fibo products.

**Power Tool Hazard:** To prevent personal injury or possible death, always follow the electrical safety recommendations for the power tool's manufacturer. Do not use power tools in an unsafe manner. Power tools should only be connected to a circuit protected by ground-fault circuit interrupter (GFI).

**Shock Hazard:** Never use electric power tools around water, condensation, or other liquids. Electric shock can cause severe burns, significant injuries, and even death. If an extension cord is required always use an OSHA approved extension cord. Power cords should only be connected to a circuit protected by a ground-fault circuit interrupter (GFI).

## General information

### Required Tools

- Fibo Seal
- Fibo Clean
- Fibo Wipes
- Fibo Screw (with bit T10)
- Fibo Profiles
- Fibo Sealing Tools
- Fibo Grip
  
- Hammer
- Track saw, Plunge saw or Circular saw
- Drill with T10 drill bit
- Hole saw for shower heads and pipe penetrations
- Tape measure
- Level
- Masking tape
- Caulking gun
- Clean paper towels
- Ruler and pencil

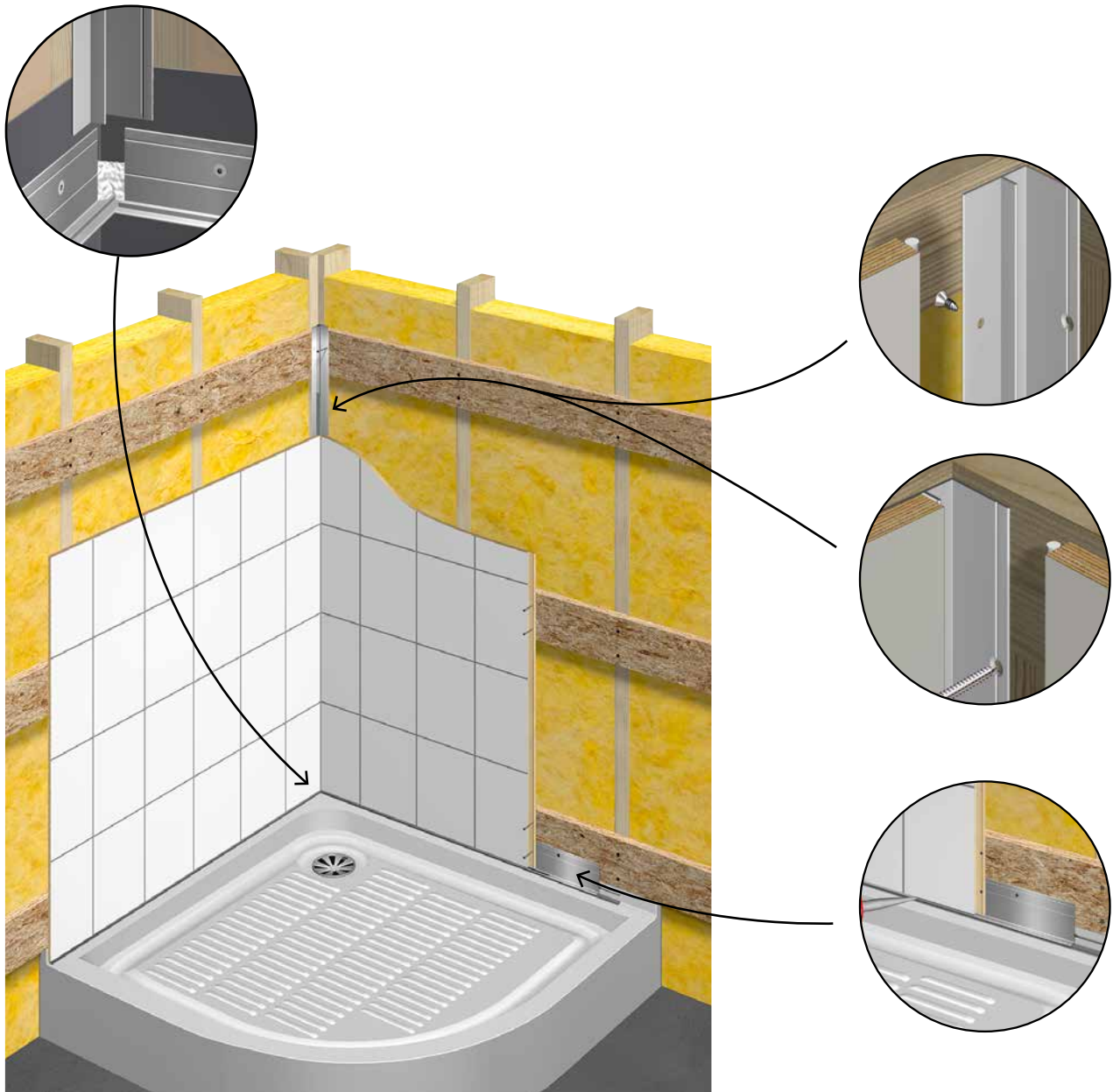
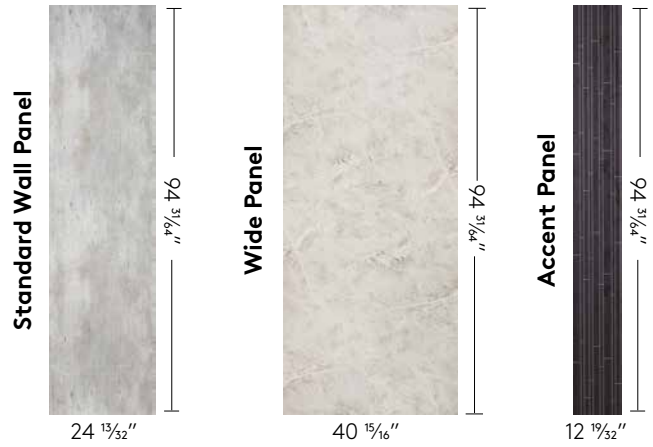
### Storage area

A suitable storage area is an area

- Where the panels can be stored flat. The panels must not be stored by standing upright on any edge.
- Where the panels can be stored in package all the way up to installation point
- Which is indoors and undercover
- Which is free of moisture
- Which is not exposed to direct sunlight or sources of direct heat

# The Fibo System

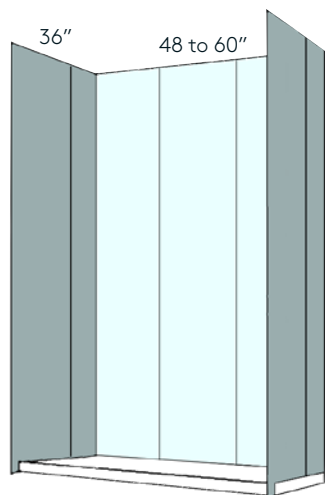
Fibo offers a complete system to ensure optimal results and make the installation as easy as possible for you. Customized accessories ensure a perfect, secure result.



# Necessary materials

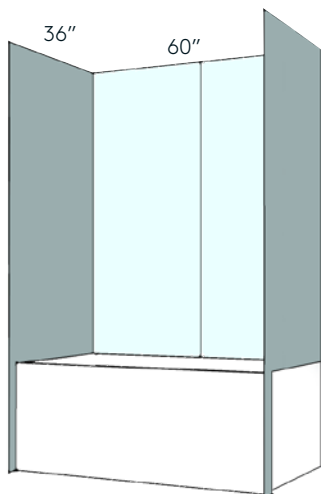
The Fibo panels are easy to cut with a regular fine tooth saw. There is therefore no need for a pre-cut kit. Cut the panels to the required size at site.

See below what you need:



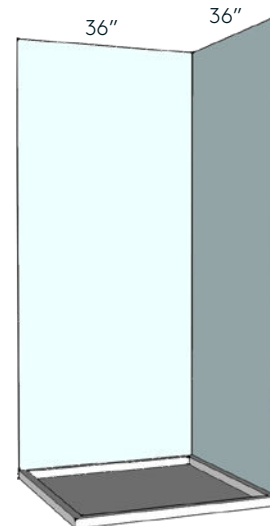
## 3 sided Alcove with shower base 48"-60" x 36"

Wall panels 24"/40":	6 / 4 panels
Internal corners:	2 pieces
Base/bottom profiles:	2 pieces
L-shaped profile:	2 pieces
Fibo Screws:	1 box of 200
Fibo Seal:	2 / 1 pieces
Fibo Clean:	1 can
Fibo Wipes:	1 box
Fibo Sealing Tool:	1 piece



## 3 sided Alcove with bathtub 60" x 36"

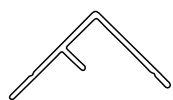
Wall panels 24"/40":	6 / 4 panels
Internal corners:	2 pieces
Base/bottom profiles:	2 pieces
L-shaped profile:	2 pieces
Fibo Screws:	1 box of 200
Fibo Seal:	2 / 1 pieces
Fibo Clean:	1 can
Fibo Wipes:	1 box
Fibo Sealing Tool:	1 piece



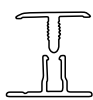
## Shower corner with base 36" x 36"

Wall panels 24"/40":	4 / 2 panels
Internal corners:	1 piece
Base/bottom profiles:	1 piece
L-shaped profile:	2 pieces
Fibo Screws:	1 box of 200
Fibo Seal:	1 pieces
Fibo Clean:	1 can
Fibo Wipes:	1 can
Fibo Sealing Tool:	1 piece

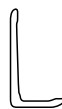
# Profiles



**Hidden Internal Corner Profile 90°**



**Stacking Profile**



**L-Profile Wide**



**L-Profile Small**



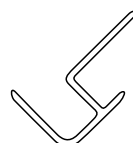
**External Corner Profile 135°**



**Internal Corner Profile 135°**



**Combi Profile**



**External Corner Profile 90°**



**Base Profile**

**ALU PROFILES PREDRILLED AND PRECUT PACKED INDIVIDUALLY**

PRODUCT NAME	LENGTH	ART. NO	MATERIAL	COLOR	TREATMENT	IN PACKAGE
Internal corner profile II, 135° predrilled/cut	94 3/4"	163938	EN AW 6060 (573-3)/ EB AW-6063 T6	Alu	Anodized	
Internal corner profile II, 135° predrilled/cut	118 7/4"	163940	EN AW 6060 (573-3)/ EB AW-6063 T6	Alu	Anodized	
Hidden corner profile	92 29/32"	163906-E	EN AW 6060 (573-3)/ EB AW-6063 T6	Alu	Anodized	9 mm screws
External corner profile II	94 3/4"	163800-E	EN AW 6060 (573-3)/ EB AW-6063 T6	Alu	Anodized	
External corner profile II	118 7/4"	163805	EN AW 6060 (573-3)/ EB AW-6063 T6	Alu	Anodized	
External corner profile II, 135° predrilled/cut	94 3/4"	163945	EN AW 6060 (573-3)/ EB AW-6063 T6	Alu	Anodized	
External corner profile II, 135° predrilled/cut	118 7/4"	163947	EN AW 6060 (573-3)/ EB AW-6063 T6	Alu	Anodized	
Base profile, predrilled	94 3/4"	163910-E	EN AW 6060 (573-3)/ EB AW-6063 T6	Alu	Anodized	
Base profile, predrilled (for flange)	94 3/4"	163912-E	EN AW 6060 (573-3)/ EB AW-6063 T6	Alu	Anodized	
L-shaped finishing profile (large)	94 3/4"	163128-E	EN AW 6060 (573-3)/ EB AW-6063 T6	Alu	Anodized	
L-shaped finishing profile (small)	94 3/4"	163317-E	EN AW 6060 (573-3)/ EB AW-6063 T6	Alu	Anodized	
L-shaped finishing profile (small)	118 7/4"	163407	EN AW 6060 (573-3)/ EB AW-6063 T6	Alu	Anodized	
Combi profile	94 3/4"	163901	EN AW 6060 (573-3)/ EB AW-6063 T6	Alu	Anodized	
Stacking profile alu, 2-parts	94 3/4"	102283	EN AW 6060 (573-3)/ EB AW-6063 T6	Alu	Anodized	

**WHITE ALU PROFILES PREDRILLED AND PRECUT PACKED INDIVIDUALLY**

PRODUCT NAME	LENGTH	ART. NO	MATERIAL	COLOR	TREATMENT
Internal corner profile white II, 2-parts	94 3/4"	163929	EN AW-6063 T6	Visible part RAL 9016	Lacquered
Internal corner profile white II, 2-parts	118 7/4"	163931	EN AW-6063 T6	Visible part RAL 9016	Lacquered
External corner profile white II, predrilled/cut	94 3/4"	163908	EN AW-6063 T6	RAL9016	Lacquered
External corner profile white II, predrilled/cut	118 7/4"	163921	EN AW-6063 T6	RAL9016	Lacquered
Stacking profile white, 2-parts	94 3/4"	102284	EN AW-6063 T6	RAL9016	Lacquered
L-profile White (small)	94 3/4"	163941-E	EN AW-6063 T6	RAL9016	Lacquered
L-profile White (large)	94 3/4"	163948-E	EN AW-6063 T6	RAL9016	Lacquered

**DARK ALU PROFILES PREDRILLED AND PRECUT PACKED INDIVIDUALLY**

PRODUCT NAME	LENGTH	ART. NO	MATERIAL	COLOR	TREATMENT
L-profile Dark (small)	94 31/64"	163943-E	EN AW-6063 T6	RAL7016	Lacquered
L-profile Dark (large)	94 31/64"	163949-E	EN AW-6063 T6	RAL7016	Lacquered

# Accessories



FIBO SEALING ACCESSORIES				
PRODUCT NAME	ART. NO	MATERIAL	SIZE	IN PACKAGE
Fibo Seal – White	400490	MS Polymer	9,8 fl oz	12
Fibo Seal – Grey	400591	MS Polymer	9,8 fl oz	12
Fibo Seal – Dark Anthracite	400593	MS Polymer	9,8 fl oz	12
Fibo Adhesive	400589	Adhesive	9,8 fl oz	12
Fibo Sealing Tools	400582			2 per packages
Fibo Tapping Tool	400584			1
Fibo Clean	400586	Aerosol Spray	13,5 fl oz	12
Fibo Wipes	400583			6 containers (35 sheets per container)



**Screw name 1/8" x 2 5/32"**  
40 pcs/box Art. no. 810005  
200 pcs/box Art. no. 810010



**Fibo Screw 1/8" x 1 3/8"**  
200 pcs/box Art. no. 810006  
1000 pcs/box Art. no. 810007



**Fibo Screws for steel studs 3/64" x 1 49/64"**  
200 pcs/box Art. no. 810011

FIBO SCREWS					
PRODUCT NAME	IN PACKAGE	ART. NO	MATERIAL	BITS	TREATMENT
Fibo Screws 1/8" x 2 5/32"	40 pcs/box + 1 bits	810005	Steel C1022	Torx T10	Zinc plated 3-5µm
Fibo Screws 1/8" x 2 5/32"	200 pcs/box + 1 bits	810010	Steel C1022	Torx T10	Zinc plated 3-5µm
Fibo Screws 1/8" x 1 3/8"	200 pcs/box + 1 bits	810006	Steel C1022	Torx T10	Zinc plated 3-5µm
Fibo Screws 1/8" x 1 3/8"	1000 pcs/box + 2 bits	810007	Steel C1022	Torx T10	Zinc plated 3-5µm
Fibo Screws for steel studs 3/64" x 1 49/64"	200 pcs/box + 1 bits	810011	Steel C1022	Torx T10	Black phosphated



# Installation

Recommended installation methods for Alcoves and Shower Corners are described further below. If in doubt on which one is most suitable for your application, please contact Fibo sales rep or a professional craftsman. The selection of installation method is important step before starting any installation.

For best result use Fibo Seal for sealing the Aqualock click and profiles, this product has a proper bonding to the Fibo products and shower trays and bath tubs. One tube of Fibo Seal is enough for approximately 65.61 running feet. As a general rule, one tube of Fibo Seal is enough for three packs of panels. As a general rule, you will need one package of screws for five packs of panels.

Ensure that you have all the correct products, accessories and tools for the installation as referred to in sections Necessary materials, Required Tools and Parts. The products must be checked visually for errors before installing. Note, that not doing so could void your warranty.

## Helpful hints

Ensure construction is correctly sized, plumb and square.



**Allow enough time for the parts in this kit to adjust to room temperature. Recommended minimum time is set to 72 hours. We do not recommend installation of this product at temperatures below 65°F and below 40% RH.**

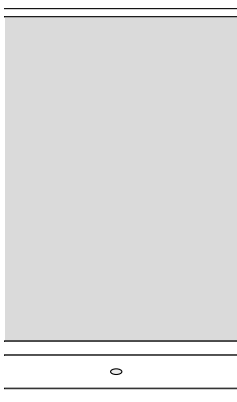
**Do not use stored Fibo panels as underlayer for cutting other Fibo panels. Make sure to have other proper underlayer available.**

## Caulking Tips

Follow the instructions of the Fibo Seal Technical Datasheet (TDS) when applying the sealant and for suitable usage areas. Use Fibo cleaning accessories and Sealing Tool to make the sealing job easier. When a job is complete, inspect all caulked areas for gaps and fill as needed. In the Aqualock click the sealant excess should be visible from top to bottom of panel, inspect for gaps and fill as needed.

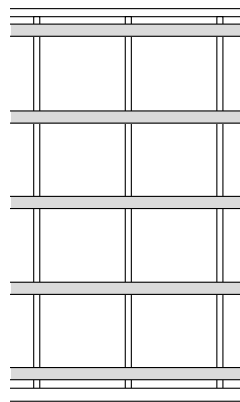
Clean up any excess sealant with Sealing Tool, Fibo Clean and Fibo Wipes. The sealant tool can be wiped dry with paper towels to remove and dispose of larger amount of sealant left on the Sealing Tool. Be careful not to disturb caulk joints.

Curing time of sealant will vary with room temperature and humidity, please see Technical Datasheet for more info.



### OSB boards

Min. 7,87" between each screw.



### OSB strips

Min. distance between strips 20" - 2 screws per strip.

## Backwall

Fibo panels can be installed over a variety of products. This section describes installation of Fibo panels over OSB strips or OSB boards. Recommended minimum thickness is 1/2". It is not recommended to install Fibo on existing membrane, as Fibo panels when installed with sealant is the waterproof membrane itself. It is not necessary to install Fibo on Sheetrock, Greenboard, Cement board etc. If you install the OSB (boards or strips) over sheetrock, greenboard etc make sure the OSB is properly fixed to the studs. If you intend to apply the panels to any surface other than those described consult with a professional contractor.



**Make sure the backwall is level and the corners are straight 90°. For uneven walls we recommend using OSB Strips and if necessary extra shims to even out.**

### **Installing access panel**

If using an access panel (size 12 1/32") be sure that the two panels next to it is divided equally. Repeat the sealing process. When the panels are clicked together remove excess with Fibo Clean, Fibo Sealing Tools and Fibo Wipes.

### **Installing niches/shelves**

Measure the niche, make cut marks and cut the hole for the niche. Apply sealant on cut surfaces. Apply sealant on the laminate edge to fasten the niche.



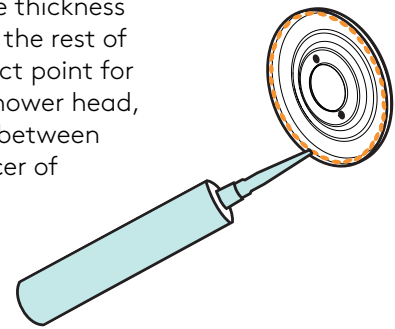
### **Dog-leg**

As an option you can attach a loose dog-leg by gluing it to the wall.

### **Sealing faucet**

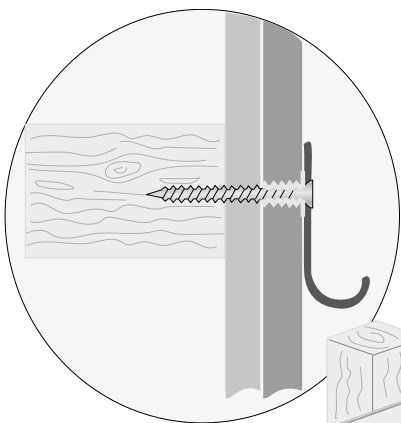
Make sure the temperature control valve for the shower goes through the thickness of the backwall and the Fibo Panel, and that it is enough space to install the rest of the shower components. Apply sealant in front of the panel at the contact point for the decorative ring and attach the ring. For the pipe hole fitting of the shower head, the distance between the panel and pipe must be sealed and the space between the decorative ring to the laminate surface. See instructions from producer of shower system for proper installation, warnings and caution sentences.

The exposed panel edges from the hole saw cut for the control valve must be covered with sealant to uphold watertight integrity.



### **Sealing and finishing with L profile**

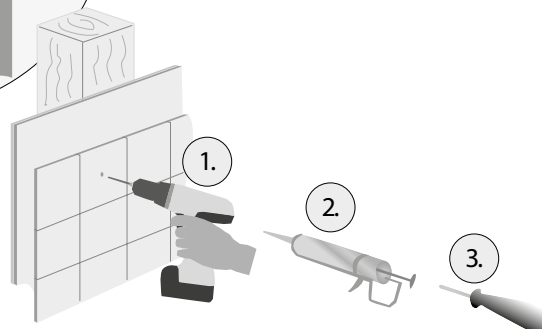
Adjust the L-shaped finishing profile to the correct height. Apply sealant inside the profile and attach it to the edge of the panel to cover the cut edge and the visible screws.



### **Installing accessories**

Put a mark where the accessories should be placed. Pre-drill holes. Important: Not all the way through the panel, just 0,2 inches. Fill the hole with Fibo Seal. Fill the hole with Fibo Seal, attach the accessories and fasten it to the wall in the pre-drilled holes.

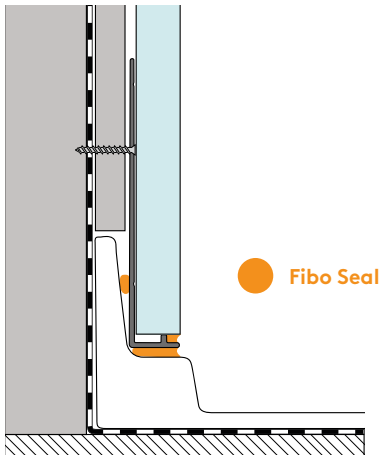
Note: Heavier equipment should be installed with HVAC screws.



# Base Profile Detail

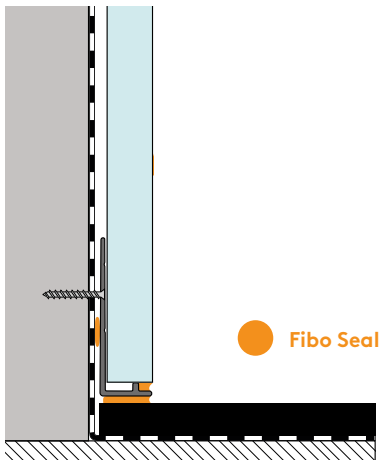
## Shower tray and bathtub

Applicable for bath tub and shower tray with flange.



## Whole Room installation

Please also know if continuing with wall panels in the whole room, then it is recommended to use base profile also outside the bath or shower tray as a transition from wall to floor. Please see figure.



**Disclaimer**

The information contained in this Installation Manual is given free of charge. It is based upon technical data which we believe to be reliable and is intended for use, by persons having knowledge of this technical area, at their own discretion and risk. Fibo assumes no responsibility for results obtained or damaged incurred from the use of this material either in whole or in part by the buyer.

If you have an installation application that is not covered in this manual, please contact a professional or a Fibo distributor. It is also important to read the instructions in the panel packages. For installation videos please see [www.fibosystemusa.com](http://www.fibosystemusa.com).

Follow all installation instructions. Failure to follow these instructions could result in personal injuries, water damage, or other damage to floors, pipes, walls or other portions of your building or home.

**Please use checklist** to ensure that all important steps are done correctly.

Checkpoints		YES	NO	Deviation/Comment
Preliminary work	<b>The panels were acclimatized before installation</b> - 72 hours in the same room, with plastic wrapping intact			
	<b>Studs and horizontal strips are correct installed</b> - 20" between horizontal strips			
Execution	<b>Base profile is correct installed</b> - Applied sealant behind the base profile - A 1/8" gap between tub/floor and base profile			
	<b>Sealant in base profile</b> - Sufficient sealant applied in base profile - Sufficient sealant applied below base profile			
	<b>Corner Profile is correct installed</b> - Corner profile screwed to the back of panel and to the studs			
	<b>Sealant in base profile and Aqualock (click)</b> - Used approved Fibo sealant for profiles and Aqualock?			
	<b>Correct screwing</b> - Corrects Screws used? - Fixed with 2 screws pr. horizontal strips and 1 screw in base profile			
	<b>Approved sealant used on cutting surfaces</b> - Fibo Seal White/Grey/Dark Anthracite			
	<b>Clearance between top of panel and ceiling</b> - Allow minimum a 1/4" gap			
	<b>Clearance around pipes</b> - Allow a 1/4" gap			
	<b>Support for shower doors, WC for disable, mirrors, fittings</b> - Approved to any suppliers specification?			
Final treatment	<b>Clean Panels</b> - Have they used Fibo Cleaner, Fibo Wipes for cleaning of panels?			

The intention of the summary is to simply assist you in using our products in identifying some areas where we believe your satisfaction with our products can be improved. In no way does this constitute certification of or approval that your inventory or installation practices comply with any applicable laws, codes, or regulations. It remains your responsibility to ensure that your homes, as constructed, comply with all applicable laws, regulations and standards and do not pose as an unreasonable risk of harm.

# Installation Procedures

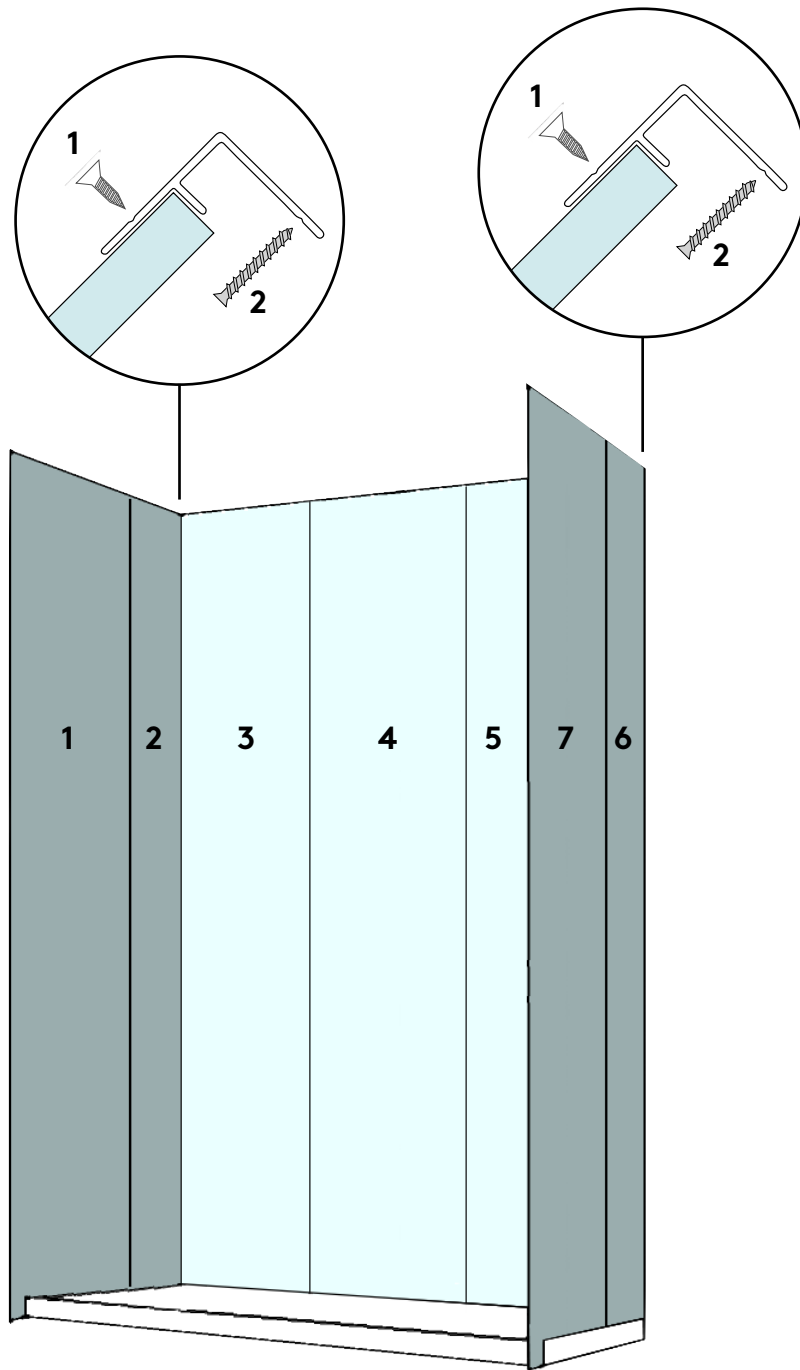
## **Overview installation methods**

Select wanted décor and what size that panel is available in. The width of the panel will and the pattern will determine what installation procedure to follow. If in doubt what installation procedure you should select, please contact a Fibo distributor.

For decors such as Crescendo collection or 9 and 10 foot long panels, the installation procedure for standard wall panels are recommended.



# Alcove - Standard Wall Panels



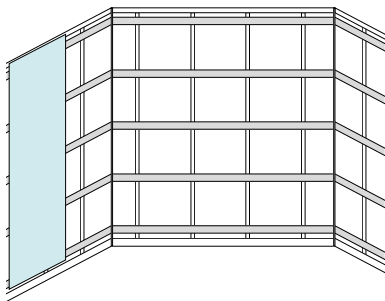
### 1. Measure, cut and install base profile

Measure the length needed and cut the profile. Put sealant behind the profile. Screw the profile to the wall. We recommend a gap of 1/8 inch between the tray/tub and the base profile.



### 2. Installing first panel

Make sure the wall is plum, and always start the installation from left to right when using 24 inch wide panels. Measure to correct size and cut the first panel. Important: if tile pattern; we recommend to divide panel equally (uniform). Clean the edges and apply sealant on all cut surfaces that will not be covered with an L-profile. Make sure the panel is plum. Screw the panel to the back wall in the screw-lip. Remember the bottom screw should penetrate the base profile.

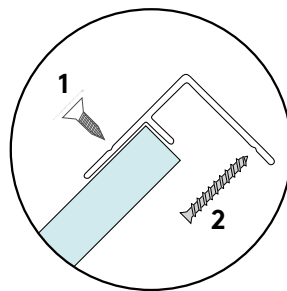
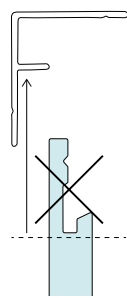
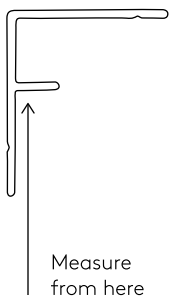


Apply sealant in lip



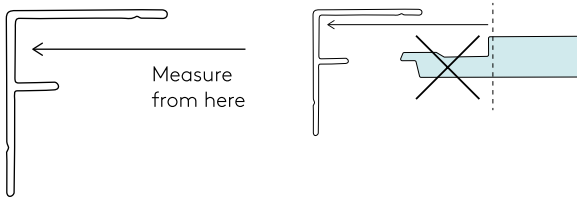
### 3. Installing the second panel and sealing the Aqualock click

Measure the panel all the way from the edge of the laminate to the **tap of** the internal corner profile and cut to size needed. Make sure to apply sealant on the cut edges before installing the panel. Install the internal corner to the panel using the screws enclosed in the packaging. Apply sealant in the sealing "lip". when the panels are clicked together remove excess with Fibo Clean, Fibo Sealing Tool and Fibo Wipes.



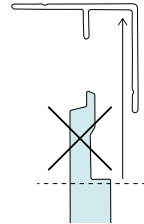
#### **4. Installing the first panel on the back wall**

Measure the panel all the way from the edge of the laminate to the bottom of the internal corner profile and cut to size needed. Screw the panel to the back wall in the Aqualock lip. Repeat the sealing process of the Aqualock.



#### **6. The last return wall**

Measure the panel all the way from the edge of the laminate to the bottom of the internal corner profile and cut to size needed. Repeat the sealing process. Screw the last panel on the edge which will be covered with an L-shaped finishing profile. We recommend pre-drilling holes to get the best result.



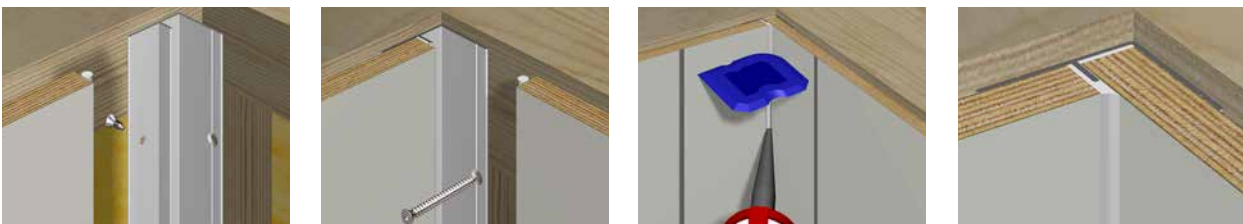
#### **7. Sealing the base profile**

Clean the base profile with Fibo Wipes, apply sealant between the bottom of the panel and the base profile, remove excess with Fibo Clean and Fibo Sealing Tool. Apply sealant between the tub/tray and the base profile, remove excess with Fibo Clean and Fibo Sealing Tool.



#### **8. Sealing the internal corner**

Clean the corner with Fibo Wipes. Apply Fibo Seal in the corner. Remove excess with Fibo Clean and Fibo Sealing Tool.



#### **9. Finishing with L-profile**

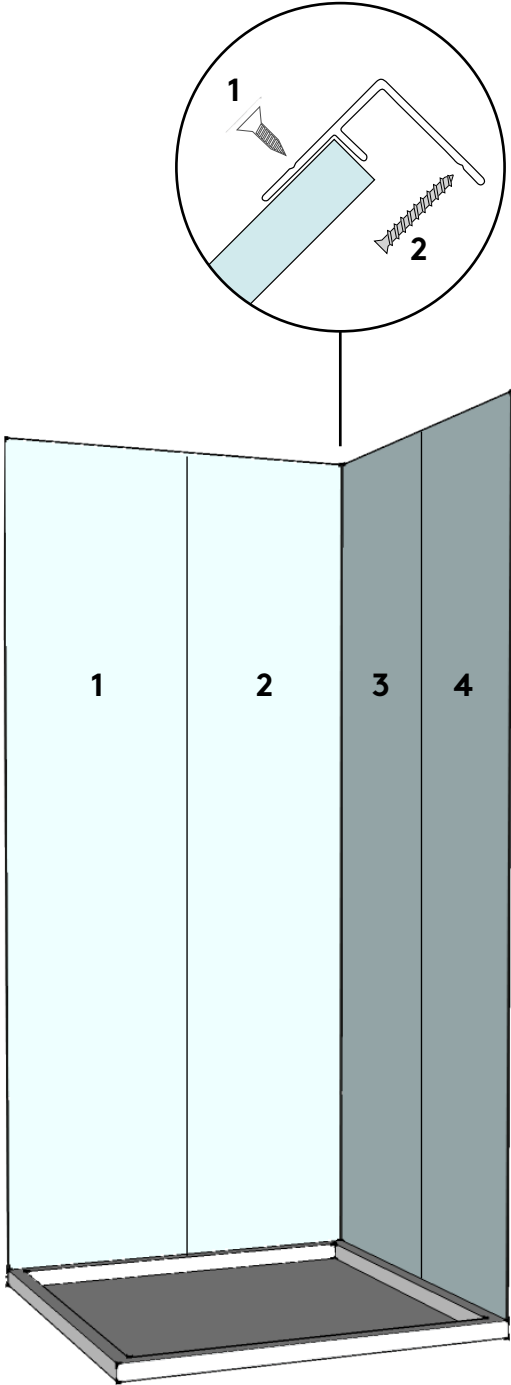
Adjust the L-shaped finishing profile to the correct height. Apply sealant inside the profile and attach it to the edge of the panel to cover the cut edge and the visible screws.



**WARNING: Fumes Hazard:** The fumes from the Fibo Clean used by the installer can be harmful if used in an unventilated room. Always work in a well-ventilated area. To keep the area well-ventilated, open windows and use exhaust fans. If adequate ventilation is not achievable or practical, use respiratory protective equipment



# Shower Corner - Standard Wall Panels



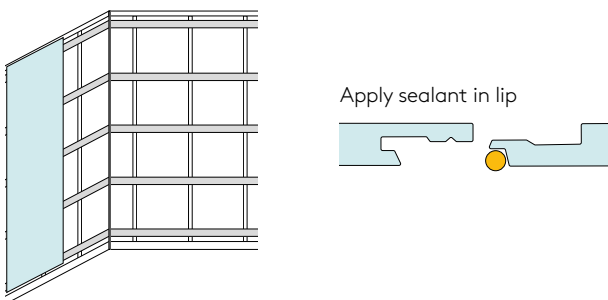
### 1. Measure, cut and install base profile

Measure the length needed and cut the profile. Put sealant behind the profile. Screw the profile to the wall. We recommend a gap of 1/8 inch between the tray/tub and the base profile.



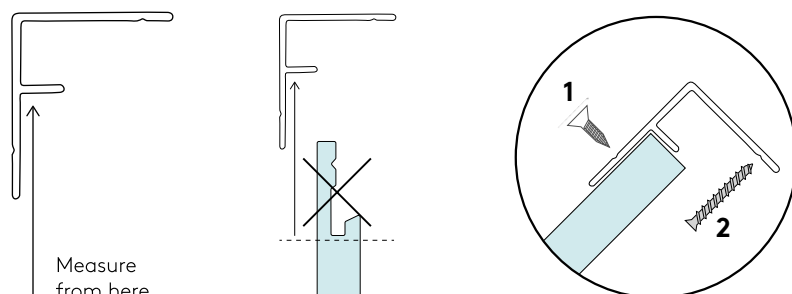
### 2. Installing first panel

Make sure the wall is plumb and cut panel to size needed. If the panel is only around the shower corner and not the whole room, make a straight cut on the left end of the first panel. This will be covered with an L profile in the end. Clean the edges and apply sealant on all cut surfaces.



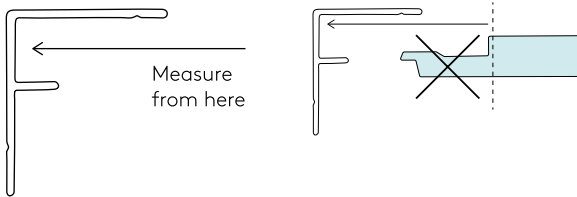
### 3. Installing the second panel and sealing the Aqualock click

Measure the panel all the way from the edge of the laminate to the bottom of the internal corner profile and cut to size needed. Make sure to apply sealant on the cut edges before installing the panel. Install the internal corner to the panel using the screws enclosed in the packaging. Apply sealant in the sealing "lip". when the panels are clicked together remove excess with Fibo Clean, Fibo Sealing Tool and Fibo Wipes.



#### **4. Installing the first panel on the back wall**

Measure the panel all the way from the edge of the laminate to the bottom of the internal corner profile and cut to size needed. Screw the panel to the back wall in the Aqualock lip. Repeat the sealing process of the Aqualock.



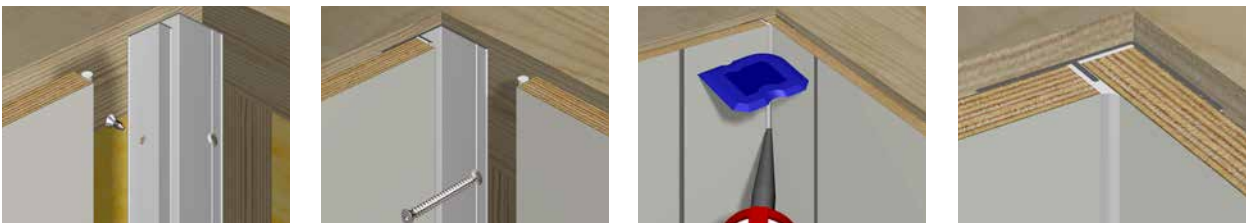
#### **5. Sealing the base profile**

Clean the base profile with Fibo Wipes, apply sealant between the bottom of the panel and the baseprofile, remove excess with Fibo Clean and Fibo Sealing Tool. Apply sealant between the tub/tray and the baseprofile, remove excess with Fibo Clean and Fibo Sealing Tools.



#### **6. Sealing the internal corner**

Clean the corner with Fibo Wipes. Apply Fibo Seal in the corner. Remove excess with Fibo Clean and Fibo Sealing Tool.



#### **7. Installing the L-shaped finishing profile**

Apply sealant in front of the panel at the contact point for the decorative ring and attach the ring. Adjust the L-shaped finishing profile to the correct height. Apply sealant inside the profile and attach it to the edge of the panel to cover the cut edge and the visible screws.

#### **8. Installing accessories**

Put a mark where the accessories should be placed. Pre-drill holes. Important: Not all the way through the panel, just 0,2 inches. Fill the hole with Fibo Seal. Fill the hole with Fibo Seal, attach the accessory and fasten it to the wall in the pre-drilled holes. (Note: Heavier equipment should be installed with HVAC screws).



**WARNING:** Fumes Hazard: The fumes from the Fibo Clean used by the installer can be harmful if used in an unventilated room. Always work in a well-ventilated area. To keep the area well-ventilated, open windows and use exhaust fans. If adequate ventilation is not achievable or practical, use respiratory protective equipment.

# Cleaning

## **General information about detergents**

Detergents for private consumers, as well as general detergents for large consumers, are rarely corrupt. However, they may seem irritating to the skin, the higher or lower pH value they have. Lukewarm water is for regular cleaning. Gloves should be used for prolonged contact with concentrated products or solutions, as the cleaning agents can dry out the skin. Be careful with inhalation of aerosols (shower/spray bottle) as these may irritate the mucous membranes.

## **Good advice**

Always apply the detergent where it is the most "dirty" first and wipe these areas last so that the detergent will last for the longest time to work before drying out.

## **Daily/weekly cleaning**

Alkaline - neutral detergent with pH value 7-10 and lukewarm water

## **Less frequent cleaning**

Against deposits, lime, rust and irr use "acid" detergent with pH 1-5 and cold water. A viscous detergent that hangs on vertical surfaces can also be used.

## **Residues of soap and skin fat**

Use "acid" detergent with pH 3-5. Or use "spray products" that dissolve fat - or careful use of "scouring creams".

## **Stain/Problem Spots**

Spray products and liquid scouring creams are suitable for stain removal. The spray products are best suited because they do not contain water-soluble minerals. - Abrasives containing this must be rinsed or wiped off. Microfibre cloths with "fleece solvents" can also be used. In difficult spots, allow detergent to work, work area with washing pad, cloth, or similar. Melamine sponges together with dishwasher soap can be used on stains on structures such as GEM, C and STN.

## **Aluminium Profiles**

There should be no corrosion as long as the pH of the detergent is above 4 or below 9. If chlorine is used on the profiles and rinses clean afterwards, it should also work well. Alkaline cleaner should be used with caution. There are mild alkaline cleaners designed for cleaning aluminum.

## **Sealant**

Soap and skin residue should be removed from the sealant frequently to avoid fungi growth. If sealant is damaged it must be replaced according to the technical datasheet of the sealant.

**Not doing so could void your warranty.**

Common to all detergents is that one must follow the instructions carefully.

Over time the sealant may become brittle or damaged or partly peel away and therefore should be inspected routinely. As sealant degrades it will become more susceptible to mold infestation.

The sealant should also be cleaned regularly with the panels to prevent mold growth - particularly the bead of sealant at the base of the panels where water is most likely to pool. If the mould cannot be removed by cleaning and becomes impregnated in the sealant, then the sealant may need to be replaced.

If the sealant is damaged or breaks free from the panel surface, then it must be treated immediately. Replacing the sealant will take a bit of time and effort.

# Maintenance

## **Replacing Sealant**

1. Wash the area including the panels adjoining the sealant to clean off any grime and soap scum. This is an important initial step as it is best not to clean the panel after the sealant has been removed and the panel is exposed. Allow the area to completely dry.
2. There are a number of products that will loosen sealant including Soudal Sealant Remover or WD-40®. Whilst not essential, these will help loosen the sealant from the surfaces to which it is attached.
3. Slide a Stanley knife or razor down the length of the caulk seam on one side of the bead. Hold the tool so the blade doesn't cut into the panel or the floor, but cuts near to it instead (at the base). The aim is to cut the sealant loose on the first edge, without cutting through the entire bead or down into the joint.
4. Switch to the opposite side of the sealant bead and repeat the process, slicing through a point very close to where the sealant bonds to the tile. Avoid cutting so deeply that sealant bead is completely removed. Using just the tip of the knife on each side of the bead is enough.
5. Grab a loose edge of the sealant bead and peel it up and away from the floor, which should draw out the sealant that filled the joint as well, not just the visible portion of the sealant bead. Use a plastic scraper to remove any remaining traces.
6. Wipe the area where the sealant was present clean and apply new sealant.

## **Chips and Scratches**

Small chips and scratches can be repaired by using a laminate repair kit, such as 'Unika Colorfill'; generally available on-line. Alternatively, a hard setting epoxy filler with an enamel paint can be used. Use a spatula to press filler into the chipped area, wipe away any excess. Once the filler has dried paint over the filler; if the paint comes in a spray can, then spray a small amount of paint into the lid of the can then use a fine brush or ear bud to apply. Matching colors may be difficult. It is possible with some repair products to mix colors to create a broader spectrum of colors. Note, that in most cases small scratches and chips should not affect the waterproofing properties of the panel. If unsure whether the waterproofing of the panel is affected, then either ensure the affected area remains dry or if that is not possible cover the damage with a temporary sealant until it can be properly assessed or repaired.

## **Aluminum Profiles**

These are either powder coated or anodized and should remain free of any corrosion with normal usage. Aluminum is susceptible to corrode or become pitted if exposed to either low pH (acidic below pH 4) or high pH (alkaline over pH9). Strong acidic or alkaline cleaners should always be avoided. Small chips in the powder coating can be repaired using auto enamel paints, however it may not be possible to achieve an identical match to the powder coated finish, because of the baking process used in powder coating that cannot be replicated in-situ.

# Warranty

## **Conditions**

Fibo warrants that the product supplied will be new and free of any damage or defect. For full warranty conditions please visit [www.fibosystemusa.com](http://www.fibosystemusa.com).

Fibo guarantees the performance of the Fibo System for 15 years from the delivery date, to the extent that the product:

- Will not delaminate
- Will not stain or fade
- Will not crack
- Will remain fit for purpose when maintained according to cleaning and maintenance.



## **Exclusion**

This warranty will not cover any of the following circumstances:

- Any installation or alteration to the Product that results in an incorrect seal.
- Where any part of the sealant adjoining the panels has been damaged or has degraded and is left unrepared.
- Inappropriate use of the Product, such as a floor.
- Installations in high use commercial areas such as aquatic/swimming centers or gymnasium showers.
- Installations in areas of extreme heat and/or humidity such as over a spa, jacuzzi or in a sauna or steam room.
- Any use of the Product outdoors.
- Product used in exhibition displays.
- Damage caused by fire or intense heat.
- Installations where the Products are exposed to direct sunlight for long periods.
- Negligent or willful damage.
- Damage caused by natural events.
- Damage caused by the movement of the building due to land slip, failure of a foundation or the underlining building structure; and infestation by termites or other boring insects.

## **Warranty limitations**

Fibo does not warrant any claims for:

- Indirect and consequential damage are explicitly excluded from this warranty.
- Normal wear and tear.

## Tests and approvals

- UL 723 fire test
- CARB 93120 ATCM compliant
- TSCA Title VI compliant
- ASTM E1333 Emission test



BUILDING UNITS  
R39061



LAMINATED PANEL  
R39061  
LISTED IN ACCORDANCE WITH  
CAN/ULC-S102



Fremmer bærekraftig  
forvaltning av skog  
[www.pefc.no](http://www.pefc.no)





**Fibo**

A smart way  
to transform  
your wall

**FIBO USA, LLC**  
160 Greentree Drive  
Suite 101, Dover  
Delaware 19904

Tel.: 1-617-416 7180  
E-mail: [info@fibosystem.com](mailto:info@fibosystem.com)  
[www.FiboSystemUSA.com](http://www.FiboSystemUSA.com)

© @designbyfibo